

Mickey Liddell
Double Gemini Productions
Karma Productions
Berlind Productions
Caitlin Clements
Bonnie & Kenneth Feld
Robert Greenblatt
John Gore Organization
Eva Price

Stacey Mindich
Hunter Arnold
Fakston Productions
On Your Marks Group
Bob Boyett
Freddy DeMann
FickStern Productions
Jeremiah J. Harris and Darren P. DeVerna
Mike Kriak
Zeilinger Productions
Ambassador Theatre Group

Caiola Productions
Roy FurmanHarris
Darren Bagert
Colin Callender
Dante Di Loreto
Eric & Marsi Gardiner
David Mirvish
Adam Zotovich

Independent Presenters Network AND The Shubert Organization

EXECUTIVE PRODUCERS

Wendy Orshan and Jeffrey M. Wilson

IN ASSOCIATION WITH

Arena Stage
Molly Smith, Edgar Dobie

Second Stage Theater
Carole Rothman, Khady Kamara

DEAR EVAN HANSEN

BOOK BY
STEVEN LEVENSON

MUSIC AND LYRICS BY
BENJ PASEK & JUSTIN PAUL

STEPHEN CHRISTOPHER ANTHONY
STEPHANIE LA ROCHELLE
KELSEY VENTER
JOHN HEMPHILL
CIARA ALYSE HARRIS

JESSICA E. SHERMAN
NIKHIL SABOO
ALESSANDRO COSTANTINI
SAM PRIMACK

MUSIC SUPERVISION, ORCHESTRATIONS & ADDITIONAL ARRANGEMENTS BY
ALEX LACAMOIRE

CHOREOGRAPHY BY
DANNY MEFFORD

DIRECTED BY
MICHAEL GREIF

SCENIC DESIGN BY
DAVID KORINS

PROJECTION DESIGN BY
PETER NIGRINI

COSTUME DESIGN BY
EMILY REBHOLZ

LIGHTING DESIGN BY
JAPHY WEIDEMAN

SOUND DESIGN BY
NEVIN STEINBERG

HAIR DESIGN BY
DAVID BRIAN BROWN

ASSOCIATE MUSIC SUPERVISOR
BEN COHN

MUSIC DIRECTOR
GARRET HEALEY

MUSIC COORDINATORS
MICHAEL KELLER
MICHAEL AARONS

VOCAL ARRANGEMENTS &
ADDITIONAL ARRANGEMENTS BY
JUSTIN PAUL

MARKETING AND PUBLICITY
DIRECTION

BOND THEATRICAL
DJ MARTIN
MARC VISCARDI

TOUR BOOKING AGENCY
THE BOOKING GROUP
MEREDITH BLAIR
KARA GEBHART

ADVERTISING & MARKETING
SERINO COYNE

NATIONAL PRESS REPRESENTATIVES
GRAPEVINE PR

SOCIAL MEDIA
MARATHON DIGITAL

CASTING BY
TARA RUBIN CASTING
KEVIN METZGER-TIMSON
PRODUCTION MANAGEMENT
JUNIPER STREET PRODUCTIONS

PRODUCTION SUPERVISOR
JUDITH SCHOENFELD
PRODUCTION STAGE MANAGER
JOVON E. SHUCK
COMPANY MANAGER
DEANN L. BOISE

SENIOR ASSOCIATE DIRECTOR
DANNY SHARRON

SENIOR ASSOCIATE CHOREOGRAPHER
MARK MYARS

ASSOCIATE DIRECTORS
TREY ELLETT
CANDIS C. JONES

ASSOCIATE CHOREOGRAPHERS
JENNIFER RIAS
JONATHAN WARREN

GENERAL MANAGER
101 PRODUCTIONS, LTD.

Originally presented by Arena Stage – July 9, 2015 to August 23, 2015
New York premiere at Second Stage – March 26, 2016 to May 29, 2016

Original Cast Recording Available on Atlantic Records.



VIRTUAL STAGE DOOR

While we might not be able to meet you in person after the show, you still can bring the post-show experience home.

Scan the QR code to upload your photo and add yourself to a custom-made, autographed mosaic featuring the entire cast. Afterwards, you can download and share your own special mosaic.

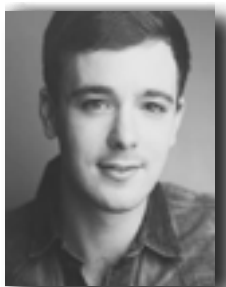
It's virtually that easy!



The use of any recording device, either audio or video, and the taking of photographs, either with or without flash, is strictly prohibited by law. Please turn off all electronic devices such as cellular phones, beepers and watches prior to the beginning of the performance.

DEAR EVAN HANSEN
WILL BE PERFORMED WITH ONE 15-MINUTE INTERMISSION

View the digital program at whartoncenter.com/program



Stephen Christopher
Anthony



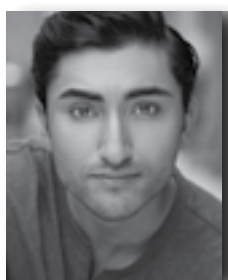
Stephanie
La Rochelle



Jessica E.
Sherman



Kelsey
Venter



Nikhil
Saboo



John
Hemphill



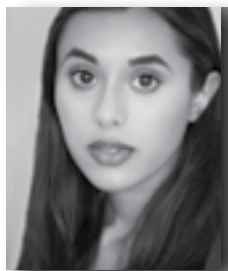
Alessandro
Costantini



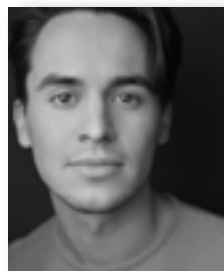
Ciara
Alyse Harris



Sam
Primack



Alaina
Anderson



Julian
Diaz-Granados



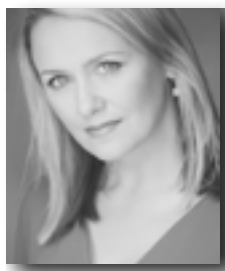
Haile
Ferrier



Reese Sebastian
Diaz



Matthew Edward
Kemp



Coleen
Sexton



Daniel Robert
Sullivan



Keely
Vasquez

CAST

(in alphabetical order)

Evan HansenSTEPHEN CHRISTOPHER ANTHONY
(Saturday mat. and Sunday eve. performances) SAM PRIMACK
Jared Kleinman ALESSANDRO COSTANTINI
Alana Beck.....CIARA ALYSE HARRIS
Larry Murphy.....JOHN HEMPHILL
Zoe Murphy..... STEPHANIE LA ROCHELLE
Cynthia Murphy KELSEY VENTER
Connor Murphy..... NIKHIL SABOO
Heidi Hansen..... JESSICA E. SHERMAN

VIRTUAL COMMUNITY VOICES

BECCA AYERS, MARY BACON, GERARD CANONICO,
JENN COLELLA, ADAM HALPIN, MYKAL KILGORE,
STEPHEN KUNKEN, TAMIKA LAWRENCE, CARRIE MANOLAKOS,
KEN MARKS, ASA SOMERS, JASON TAM, BRENDA WEHLE,
NATALIE WEISS, TIM YOUNG, REMY ZAKEN

UNDERSTUDIES

Standbys and understudies never substitute for players unless a specific announcement for the appearance is made at the time of the performance.

Understudy for Evan Hansen, Connor Murphy, Jared Kleinman:
REESE SEBASTIAN DIAZ, MATTHEW EDWARD KEMP, SAM PRIMACK;
Understudy for Jared Kleinman, Connor Murphy: JULIAN DIAZ-GRANADOS;
Understudy for Heidi Hansen, Cynthia Murphy: COLEEN SEXTON,
KEELY VASQUEZ; Understudy for Heidi Hansen: KELSEY VENTER;
Understudy for Alana Beck, Zoe Murphy: ALAINA ANDERSON,
HAILE FERRIER; Understudy for Zoe Murphy: CIARA ALYSE HARRIS;
Understudy for Larry Murphy: DANIEL ROBERT SULLIVAN.

Dance Captain: Kelsey Venter

MUSICAL NUMBERS

ACT ONE

"Anybody Have a Map?"	Heidi, Cynthia
"Waving Through a Window"	Evan, Company
"For Forever"	Evan
"Sincerely, Me"	Connor, Evan, Jared
"Requiem"	Zoe, Larry, Cynthia
"If I Could Tell Her"	Evan, Zoe
"Disappear"	Connor, Evan, Alana, Jared, Cynthia, Larry, Zoe
"You Will Be Found"	Evan, Company

ACT TWO

"Sincerely, Me" (Reprise)	Connor, Jared
"To Break in a Glove"	Larry, Evan
"Only Us"	Zoe, Evan
"Good for You"	Heidi, Alana, Jared, Evan
"You Will Be Found" (Reprise)	Company
"Words Fail"	Evan
"So Big/So Small"	Heidi
"Finale"	Company

MUSICIANS

Music Director/Conductor/Keyboard: GARRET HEALEY;
Associate Conductor: MICHAEL USELMANN;
Guitar: MATT BROWN, ERIC STOCKTON;
Drums: RYAN McCAUSLAND; Bass: LEON BOYKINS;
Violin/Concertmaster: EUGENE KALER; Viola: NIKKI SHORTS;
Cello: TAHIRAH WHITTINGTON

Additional Orchestrations: Christopher Jahnke
Keyboard Programmer: Randy Cohen
Associate Keyboard Programmer: Jeremy King
Ableton Programmers: Enrico de Trizio, Scott Wasserman
Music Copying: Emily Grishman Music Preparation

STEPHEN CHRISTOPHER ANTHONY (*Evan Hansen*). He/him. Stephen is overjoyed to return to the stage as Evan. Broadway: *Dear Evan Hansen* (Evan u/s), *Book of Mormon* (Ensemble, McKinley u/s). National Tour: *Catch Me If You Can* (Frank Abagnale Jr). During the shutdown Stephen got a puppy, perfected his lasagna recipe, mastered the Rubik's Cube, taught Voice at FSU, began Yoga Teacher Training certification, and truly missed every person listed in your playbill. Florida State University: BM in Musical Theatre. UCB Improv Comedy grad. Love to the entire DEH family, Stacey Mindich, Tara Rubin, Xavier Rubiano, Mom, Dad, Ryan, Cameron. IG/Twitter: @_stephenanthony. www.stephenchristopheranthony.com

STEPHANIE LA ROCHELLE (*Zoe Murphy*) is thrilled to be continuing her journey with the National Tour after appearing in the original Canadian production. Select credits: *Heartland* (CBC); *Backstage* (Disney); *In The Dark* (CW); *The Preacher's Sin* (Lifetime). Stephanie is a CCMA award nominated singer-songwriter. Huge thanks to the team at *DEH*, Stephanie Gorin, The Talent House, and her family. Let's erase the stigma. www.stephlarochelle.com
@steph_larochelle

JESSICA E. SHERMAN (*Heidi Hansen*). She/her. Original Heidi Hansen in Toronto's *Dear Evan Hansen*, for which she won the Toronto Theatre Critic's Association Award. International credits include *Rock 'n' Roll* (West End), *A Midsummer Night's Dream* (Japan), *Batman Live* (World Arena Tour), *Lend Me A Tenor* (Vienna), *John and Jen* (Guildford), *The Sound of Music* (UK Tour), *Heart of Winter* and *The Last Party* (Toronto). Film credits include *Le Dindon* (Cinéfrance). For PS, always. @jessica_like_the_tank

KELSEY VENTER (*Cynthia Murphy, u/s Heidi Hansen*). National Tour: *Dear Evan Hansen*. Selected Regional: Guthrie Theater, American Conservatory Theater, Old Globe Theater. BA in Theater SDSU, MFA American Conservatory Theater. All love and gratitude to my incredible family, friends, and mentors for believing in me. www.kelseyventer.com

NIKHIL SABOO (*Connor Murphy*) is elated to join the tour of *DEH* — aligning in his purpose of creating space, opening other's perspectives, and lifting up all aspiring South Asian artists across the country. Prior, Nikhil was on tour with the Angelica Company of *Hamilton* and in the original Broadway cast of *Mean Girls*.

Gratitude to Stewart Talent, the DEH company, and my tribe. Love to Mom, Dad, and Nisha. For Dada and Ama. @nikhil.saboo

JOHN HEMPHILL (*Larry Murphy*) starred on Broadway as Sam/Bill in *Mamma Mia!*, original Broadway company of Andrew Lloyd Webber's *School of Rock*. First National Tour of *The Curious Incident of The Dog In The Night-Time*. Film: *Zodiac* directed by Academy Award nominated David Fincher. TV: *Castle*, *Monk*, *Las Vegas*, *The Black List*, *Mr. Robot*, *Big Love* among others. Hi to my students at Stephens College! John is ever grateful to wife Jenn. @johnhemphill

ALESSANDRO COSTANTINI (*Jared Kleinman*). Born and raised in Sudbury, Ontario Canada. Alessandro is the co-founder and Artistic Director of YES Theatre, Northern Ontario's premiere institution for the support and development of emerging and Citizen Artists. Please support your entire local artistic ecology.

#lovetomyfamilyandfriends

YESTHEATRE.COM

CIARA ALYSE HARRIS (*Alana Beck; u/s Zoe Murphy*) is OVERJOYED to become your closest acquaintance! A Miami, Florida native, and graduate of the Cincinnati College Conservatory of Music (CCM), her credits include Lorraine (*All Shook Up*, *The Munny*), Mary (*Jesus Christ Superstar*, CCM) and Eve (*Children of Eden*, CCM). She thanks her family for always believing in her, HCKR, and the good Lord for always working in mysterious ways! @ciaraalyseharris

SAM PRIMACK (*Alternate Evan Hansen; u/s Connor Murphy, Jared Kleinman*) is delighted to be back with the *DEH* family, bringing hope, healing and the power of live theatre back to audiences across the country. Phoenix, AZ native. Broadway: *Dear Evan Hansen*. National Tour: *The Addams Family* (Pugsley Addams). Professional: Phoenix Theatre, Arizona Broadway Theatre. 2017 Jimmy Award finalist. Many thanks to Tara Rubin, Xavier Rubiano, Stacey Mindich, and the entire *DEH* team. Incredibly grateful for the endless support from amazing family, friends, and teachers.

ALAINA ANDERSON (*u/s Alana Beck, Zoe Murphy*) is elated to be making her professional debut in *Dear Evan Hansen*! Recent graduate of Yale University with a degree in Cognitive Science. Love and gratitude to the wonderful family, friends, and mentors who have supported her, Tara Rubin, Xavier Rubiano,

Stacey Mindich, and the whole *DEH* team.

REESE SEBASTIAN DIAZ (*u/s Evan Hansen, Connor Murphy, Jared Kleinman*). He/him. Reese is overjoyed to join the *DEH* family! Broadway: *Mary Poppins*. National Tours: *Mary Poppins, Beauty and the Beast*. Special thanks to the *DEH/Tara Rubin* teams. Much love to Mom, Dad, Nana, Sam, Frank, Roni, Warren, family, friends, and teachers.

@ReeseSDiaz

JULIAN DIAZ-GRANADOS (*u/s Connor Murphy, Jared Kleinman*) is thrilled to join *DEH*! Broadway: *Ruben and Clay's Christmas Show*. NYC/Regional Favorites: *Newsies* (Jack Kelly), *Dog Sees God* (Matt), *Cabaret* (Cliff), *Just Laugh* (Timmy). Thanks to Tara Rubin and the *DEH* teams. Love to Mama, Papa, Noah, Sam, family, friends, teachers, and my beautiful wife, Kateryna. www.juliandiazgranados.com

HAILE FERRIER (*u/s Alana Beck, Zoe Murphy*) is thrilled to be making her national tour debut fresh out of college! Haile is a proud LINK and YoungArts alum and thanks both for being second family and groups of absolute girl bosses. Thank you family, friends and mentors for your constant support!

Elon MT '21 www.haileferrier.com @haile.ferrier

MATTHEW EDWARD KEMP (*u/s Evan Hansen, Connor Murphy, Jared Kleinman*). Matthew is thrilled to be returning to his National Tour Debut! He is a graduate of The University of Michigan, BFA Musical Theatre. Endless thanks to Stacey, my *DEH* family, Luke, and my friends & family! @Matthewtheginger

COLEEN SEXTON (*u/s Heidi Hansen, Cynthia Murphy*) is thrilled to be back! Broadway: Lucy in *Jekyll and Hyde*. She has also appeared in the movie version opposite David Hasselhoff. National tours: Elphaba in *Wicked*, Brooke Wyndham in *Legally Blonde* and various roles in *Chicago*. TV: "Law and Order" and "Third Watch". Go Yankees!

DANIEL ROBERT SULLIVAN (*u/s Larry Murphy*) performed as Tommy DeVito in *Jersey Boys* more than 1000 times with the Las Vegas, Toronto, and touring companies, and in the national tour of *Motown the Musical*. He's the author of *Prospect High: Brooklyn, Braving the Bronx River, Becoming A Jersey Boy*, and *There's No Substitute for Empathy*.

KEELY VASQUEZ (*u/s Heidi Hansen, Cynthia Murphy*) is a Chicago-based actor. Most recently she was featured in Writers Theatre's production of *Next to Normal*, and in The Mercury Theater's *Spamalot*. For nearly a decade, she toured the world singing with Barry Manilow and was featured on countless TV shows and DVD specials.

STEVEN LEVENSON (*Book*) is a Tony Award-winning playwright, screenwriter, and television writer and producer. His plays include *If I Forget*, *Core Values*, *Seven Minutes in Heaven*, and *The Language of Trees*. He co-created and executive produced the FX series "Fosse/Verdon," which was nominated for seventeen Emmy Awards, including Best Limited Series and Best Writing for a Limited Series, as well as for Critics' Choice Association and Producers Guild Awards, and won the Writers Guild Award and an AFI Award for Outstanding Series. Other honors include the OBIE Award, two Outer Critics Circle Awards, and the John Gassner Memorial Playwriting Award. Film projects include the adaptation of Jonathan Larson's *Tick, Tick...Boom!*, directed by Lin-Manuel Miranda, for Netflix. He is a graduate of Brown University.

BENJ PASEK & JUSTIN PAUL (*Music and Lyrics*). Oscar, Grammy, Tony, and Olivier Award-winning songwriters Benj Pasek & Justin Paul are best known for their work on *Dear Evan Hansen*, *La La Land*, and *The Greatest Showman*. Their accompanying albums for each project have appeared in the top 10 of the Billboard 200, the latter of which certified Platinum in over a dozen countries, including Triple Platinum in the US, New Zealand, China, Taiwan, and Indonesia, Quadruple Platinum in the Philippines, Hong Kong, and Australia, 6x Platinum in Singapore, 7x Platinum in the UK, 9x Platinum in Ireland, and 10x Platinum in Korea. Other credits: Broadway - *A Christmas Story*, *The Musical*; Off-Broadway/Regional - *Dogfight*, *James and the Giant Peach*, *Edges*; Film: *Aladdin*, *Trolls*; Television: "Smash," "The Flash," and "A Christmas Story, Live!" With the release of the novelization of *Dear Evan Hansen*, Benj and Justin became New York Times Best-Selling Authors. Upcoming film projects include Disney's live-action *Snow White*, Sony's live-action hybrid musical *Lyle, Lyle, Crocodile*, and an original live-action musical with Apple.

MICHAEL GREIF (*Director*) received his fourth Tony nomination and a Helen Hayes Award for his work on *Dear Evan Hansen*. Other Broadway credits: *Rent*, *Grey Gardens*, *Next to Normal*, *Never Gonna Dance*, *If/Then*, *War Paint*.

Recent work includes *Make Believe* (Second Stage; New York Times Best of 2019), *Man in the Ring* (Huntington Stage; Norton Award for Best Production), *Our Lady of Kibeho* and *Angels in America* (NY's Signature Theatre); *The Low Road* and *The Intelligent Homosexual's Guide...* (The Public); and *The Tempest*, *The Winter's Tale* and *Romeo and Juliet* at The Public's Delacorte Theater. Off-Broadway, he's received Obie Awards for *Machinal*, *Dogeaters* (The Public) and *Rent* (NYTW), and has directed new plays and musicals at Playwrights Horizons, Roundabout, MTC, MCC, New York Theatre Workshop and at Second Stage, where he directed *Next to Normal* and *Dear Evan Hansen*. Regional work includes premieres and revivals at Williamstown Theatre Festival, La Jolla Playhouse, Arena Stage, Center Stage, Mark Taper Forum, Dallas Theater Center and Trinity Repertory Company. Mr. Greif holds a BS from Northwestern University and an MFA from the University of California, San Diego.

DANNY MEFFORD (*Choreographer*). Danny has choreographed two Best Musical Tony winners: *Fun Home* and *Dear Evan Hansen*. His other Broadway credits are *The Bridges of Madison County* and *Bloody Bloody Andrew Jackson*. For television, he staged the theatrical sequences for "Rise" on NBC and made dances for "Dickinson" on Apple TV+. Other favorite credits include *Good Person of Szechwan* starring Taylor Mac, *Love's Labour's Lost* and *Much Ado About Nothing* in Central Park, an international tour of *The Sound of Music* and the Off-Broadway musical *Miss You Like Hell*. He has been nominated for Drama Desk, Lortel and Astaire awards. MFA from Brown University, BS from the University of Evansville.

ALEX LACAMOIRE (*Music Supervisor/Orchestrator*) is a four-time Grammy, three-time Tony and Emmy winner, for his work on *Dear Evan Hansen*, *Hamilton*, *In the Heights* and FX's "Fosse/Verdon." Some of his credits as music director, arranger and/or orchestrator include *Message in a Bottle* (London), *Annie* (2011 Broadway revival), *9 to 5* (Drama Desk and Grammy noms), *Legally Blonde*, and *Wicked*. Recent film/TV credits include composing for Netflix's *Vivo* and serving as Executive Music Producer on the film *Tick, Tick...Boom!* Love to Mom, Dad, Lil Sis, and his wife, Ileana.

DAVID KORINS (*Scenic Design*). Broadway: *Mrs. Doubtfire*, *Beetlejuice* (Tony nom.), *Hamilton* (Tony nom.), *Dear Evan Hansen*, *War Paint* (Tony nom.), *Bandstand*, *Misery*, *Motown: The Musical*, *Vanya and Sonia...*, *Annie*, *Bring*

It On, Godspell, The Pee-wee Herman Show, Lombardi, Passing Strange and Bridge & Tunnel. TV: 91st Academy Awards (Emmy nom.), “Grease: Live!” (Emmy winner). Concert: Bruno Mars, Lady Gaga, Kanye West, Sia, Mariah Carey, Andrea Bocelli. Dad: Stella & Vivian.

PETER NIGRINI (*Projection Design*) is one of Broadway’s pioneering projection designers. His work includes *Ain’t Too Proud; Beetlejuice; The SpongeBob Musical; A Doll’s House, Part 2;* and *Fela!* He also has designed extensively in other venues and forms including *Here Lies Love* and *Grounded* at the Public Theater; *Lucia di Lammermoor* and *Don Giovanni* for Santa Fe Opera; *The Grace Jones Hurricane Tour, Blind Date,* and *Deep Blue Sea* for Bill T. Jones and the Park Avenue Armory, and *Real Enemies* with Darcy James Argue and *Secrete Society* at BAM. He was also a founding member of Nature Theater of Oklahoma and is currently designing *MJ, The Musical.*

EMILY REBHOLZ (*Costume Design*). Broadway: *Jagged Little Pill* (Tony Nomination); *Frankie and Johnny; Gettin’ the Band Back Together; Indecent; Oh, Hello on Broadway; If/Then; Vanya and Sonia and Masha and Spike; Bloody Bloody Andrew Jackson.* Select Recent: *Nantucket Sleigh Ride* (LCT) *Jagged Little Pill* (A.R.T), *The Low Road* (The Public Theatre: Henry Hewes Award, Lucille Lortel Nomination), *The Winter’s Tale* (TFNA), *Mary Jane* (NYTW), *Twelfth Night* (CSC), *Brigadoon* (Encores!), *The Robber Bridegroom* (Roundabout), *Lucia Di Lammermoor* and *Don Giovanni* (Santa Fe Opera). *Orfeo ed Euridice* (Opera Theatre of St. Louis) MFA: Yale University

JAPHY WEIDEMAN (*Lighting Design*). Broadway: *Lobby Hero, Charlie and the Chocolate Factory, Significant Other, Bright Star, Dear Evan Hansen* (Tony nom.), *The Visit* (Tony nom.), *Airline Highway* (Tony nom.), *The Nance* (Tony nom.), *Of Mice and Men* (Tony nom.), *Sylvia, Old Times, The Heidi Chronicles, Macbeth, Cyrano de Bergerac, The Snow Geese.* Off-Broadway: Lincoln Center Theater, NYTW, The Public (Shakespeare in the Park), Second Stage, Playwrights Horizons, MTC, MCC, LAByrinth, Vineyard, others. West End: *Dear Evan Hansen* (Noel Coward), *A Nice Fish* (Harold Pinter Theatre), *Blackbird* (Albery Theatre).

NEVIN STEINBERG (*Sound Design*). Broadway: *Tina - The Tina Turner Musical* (Tony nomination), *Hadestown* (Tony Award), *Hamilton, Dear Evan*

Hansen, Freestyle Love Supreme, The Cher Show, Bandstand, Bright Star, It Shoulda Been You, Mothers and Sons, Rodgers & Hammerstein's Cinderella (Tony nomination), Over 30 Broadway productions with Acme Sound Partners and five additional Tony nominations: *The Gershwins' Porgy and Bess, Bengal Tiger at the Baghdad Zoo, Fences, Hair, In the Heights*.

DAVID BRIAN BROWN (*Hair Design*). Broadway highlights: *Mrs. Doubtfire, Moulin Rouge!, Frozen, War Paint* (Drama Desk Award), *She Loves Me, Curious Incident..., Gigi, The Bridges of Madison County, If/Then, Macbeth, Death of a Salesman, Follies, Sister Act, A Steady Rain, Shrek, The Little Mermaid, Legally Blonde, Spamalot, Tarzan, Nine, Gypsy, Sweet Smell of Success, The Invention of Love, Aida, The Iceman Cometh, Chicago, Side Show, Steel Pier*. Film credits: "Peter Pan Live!" (NBC), "The Sound of Music Live!" (NBC), *It's Complicated*, "Angels in America" (Emmy-nominated), *Too Wong Foo....*

JENNIFER LORD (*Natural Hair Consultant*) is an award-winning hair stylist determined to change the perception of natural hair. Along with her commitment to social justice, she's worked behind the curtain of some of the country's most exclusive runway shows during New York Fashion Week and recently styled for The Met Gala, 2021. Jennifer entered the theatre industry in 2019 and is now educating hair stylists in theater, film and television on the historical components of natural hair.

BEN COHN (*Associate Music Supervisor*). Broadway: *Wicked* (assistant conductor), *The Woman in White, ...Spelling Bee, Wonderful Town, In My Life*. Pre-Broadway: *The Book of Mormon, 9 to 5, Anastasia, Finding Neverland*. MD for Clay Aiken, Lin-Manuel Miranda's *21 Chump Street*, Stephanie J. Block, BCEFA. Ben's arrangements have been heard on TV, albums, concerts, theme parks and cruise lines. Ithaca and NYU grad. Love to Sean and Allister.

GARRET HEALEY (*Music Director*) is thrilled to be taking over as music director after spending a year touring with the show as the associate conductor. Before *Dear Evan Hansen*, Garret toured with *Kinky Boots* as associate music director and worked as a showband musician with Carnival Cruise Lines. Many thanks to Ben, Alex and Michael and much love to Mom, Dad, Evan and Jack!

MICHAEL KELLER & MICHAEL AARONS (*Music Coordinators*).

Broadway: *Moulin Rouge!*, *Hamilton*, *Jagged Little Pill*, *Dear Evan Hansen*, *Lion King*, *Wicked*, *Book of Mormon*, *Freestyle Love Supreme*, *Diana*.

Upcoming: “Annie Live”, *Flying Over Sunset*. Tours: *Pretty Woman*, *Hamilton*, *Frozen*, *Dear Evan Hansen*.

TARA RUBIN CASTING (*Casting*). Selected Broadway and National Tours: *Six*, *Sing Street*, *Ain't Too Proud*, *King Kong*, *The Band's Visit*, *Prince of Broadway*, *Sunset Boulevard*, *Miss Saigon*, *Dear Evan Hansen*, *Cats*, *Falsettos*, *School of Rock*, *Bullets Over Broadway*, *Les Misérables*, *Big Fish*, *Billy Elliot*, *Shrek*, *Spamalot*, ... *Spelling Bee*, *The Producers*, *Mamma Mia!*, *Jersey Boys*, *The Phantom of the Opera*. Selected Off-Broadway: *Trevor*, *Between the Lines*, *Clueless*, *Gloria: A Life*, *Smokey Joe's Café*, *Here Lies Love*. Film: *Here Today*.

BOND THEATRICAL (*Marketing & Publicity Direction*) is an independently-owned booking, marketing and publicity company for live entertainment productions. Current marketing and publicity shows include *1776*, *Anastasia*, *Dear Evan Hansen*, *Diana*, *Escape to Margaritaville*, *Fiddler on the Roof*, *Jagged Little Pill*, *Moulin Rouge! The Musical*, *Rodgers & Hammerstein's Oklahoma!*, *The Band's Visit*, *The Phantom of the Opera* on Broadway, *The Prom* and *Tina: The Tina Turner Musical*. Current tour marketing and booking shows include *9 to 5: The Musical*, *A Soldier's Play*, *An Officer and a Gentleman*, *Annie*, *Blue Man Group*, *CATS*, *Clue*, *Clueless*, *Company*, *Diana*, *Dr. Seuss' How The Grinch Stole Christmas! The Musical*, *Dick Clark's American Bandstand Rockin' On*, *Girl from the North Country*, *Jesus Christ Superstar*, *Kathleen Turner: Finding My Voice*, *Lempicka*, *Love Actually Live*, *The Lehman Trilogy*, *May We All*, *Spamilton*, *The Brat Pack* and *What the Constitution Means to Me*.

THE BOOKING GROUP (*Tour Booking Agency*). Since its inception in 1996, The Booking Group has represented 26 Tony Award-winning Best Musicals and Plays. Current touring productions include: *Anastasia*; *Come From Away*; *Dear Evan Hansen*; *Fiddler on the Roof*; *Hadestown*; *Hairspray*; *Hamilton*; *Mean Girls*; *My Fair Lady*; *Pretty Woman*; *Rent: The 20th Anniversary Tour*; *To Kill A Mockingbird*; *Tootsie* and *Waitress*. Future productions include: *1776*; *Chicago*, *the 25th Anniversary Tour*; *Little Shop of Horrors*; *Mamma Mia*; *MJ*; *Mrs. Doubtfire*; *Sing Street*; *Six*; *The Book of Mormon*; *Tina* and *West Side Story*.

JUDITH SCHOENFELD (*Production Supervisor*). Broadway: *If/Then*, *Next*

to *Normal*, *Grey Gardens*. Also many other productions Off-Broadway and regionally, including *Dear Evan Hansen* at Second Stage Theatre and Arena Stage. She is happy to be a part of the *Dear Evan Hansen* family again.

JOVON E. SHUCK (*Production Stage Manager*) (he/him) is a proud graduate of Michigan State University. His credits include the National Tours of: *Miss Saigon*, *Waitress*, *Hedwig and the Angry Inch*, *The Phantom of the Opera*, *Disney's The Lion King*, and *Monty Python's Spamalot*. Much love to Sheila Marie, always.

STACY N. TAYLOR (*Stage Manager*) is a proud graduate of the SM program at the University of Cincinnati - College - Conservatory of Music (CCM). Touring Credits: *Spring Awakening*, *South Pacific*, *Beauty and the Beast*, *Annie*, *Bodyguard*, *Waitress*, *School of Rock*, and *Jersey Boys*. Other Credits include: Weston Playhouse, *Blue Man Group* – Orlando.

KATELYNN COOPER (*Assistant Stage Manager*) Broadway: *Matilda*, *Dear Evan Hansen*, *Amazing Grace*. Tours: *My Fair Lady*, *School of Rock*. Off-Broadway: *Jersey Boys*, *Clinton: The Musical*. Television: *Peter Pan Live!*. Regional: MTC, Playwrights Horizons, Asolo Repertory, Huntington Theatre, and Williamstown. BFA Stage Management, Emerson College.

JUNIPER STREET PRODUCTIONS (*Production Manager*) is Hillary Blanken, Ana Rose Greene, Sadie Alisa, Guy Kwan, Victoria Bullard, Ross Leonard, Christopher Batstone and Hannah Wilson. JSP has helped create over 100 productions and is thrilled to be back on Broadway! JSP is proud to be a member of the *Dear Evan Hansen* family on Broadway and touring. Current and upcoming shows include *Beautiful*, *Come From Away*, *Diana*, *The Musical*, *Funny Girl*, *Harry Potter and the Cursed Child*, *MJ The Musical*, *Moulin Rouge*, *Mr. Saturday Night*, *Slave Play*, *Thoughts of a Colored Man*, *Tina - the Tina Turner Musical*, *Waitress*. www.juniperstreet.com

DANNY SHARRON (*Senior Associate Director*) is a Brooklyn-based director of new plays/musicals, committed to creating work about the LGBTQ+ and Middle Eastern communities. Recent directing: *The Model American* (Williamstown, world premiere). Associate: Public Theater, MTC, Playwrights Horizons, Old Globe, Huntington. Fellowships: NYTW, Williamstown, Drama League, Ars Nova. Full credits: dannysharron.com

MARK MYARS (*Senior Associate Choreographer*). Broadway Associate: *The Cher Show, My Fair Lady, SpongeBob SquarePants: The Broadway Musical, War Paint, If/Then*. International Supervisor: *Wicked*. Film/TV Associate: *Isn't it Romantic?*, "Schmigadoon!"

www.markmyars.com

TREY ELLETT (*Associate Director*). Director: First all Mandarin version of *Rent* (Shanghai). Assistant/Associate Director: *Next to Normal* (Kennedy Center), 20th Anniversary US Tour of *Rent*. As an actor, he was on Broadway in *Amélie* and *Rent* (Mark).

CANDIS C. JONES (*Associate Director*). NY: The Public Theater: *cullud wattah, shadow/land*; American Academy: *The Wolves*; New Black Fest: *Brother Rabbit*; Primary Stages: *Morning in America*; NYU Tisch: *Everybody*. Regional: *Name Calling* (Kennedy Center), *Solo Plays by Black Playwrights* (Williamstown Theatre Festival), *Detroit '67* (Signature Theatre), *53% Of* (Alliance Theater), *Pipeline* (Detroit Public Theater). 2016 Lilly Award, WP Theater's 2018-2020 Lab, Drama League Alumni.

www.candiscjones.com

JENNIFER RIAS (*Associate Choreographer*). Original Broadway Companies: *The Cher Show, Escape to Margaritaville, War Paint, Aladdin*. Broadway Debut: *Rock of Ages*. Additional NY credits: *Into the Woods* at the Delacorte, *Rockette* at Radio City Music Hall. Choreographer: *Spamalot* at Ogunquit Playhouse. Love to Mike and to everyone who got me here!! Greif, Mefford and Myars...Thank you.

JONATHAN WARREN (*Associate Choreographer*). Broadway/tour: *Wicked, The Sound of Music, A Night with Janis Joplin*. International: *Wicked* (Mexico City). Regional: *La Cage aux Folles, West Side Story, A Night With Janis Joplin, Cats, The Radio City Christmas Spectacular, The Hot Mikado*. Film: *Outside Providence*.

LIZ CAPLAN VOCAL STUDIOS, LLC (*Vocal Consultant*). Broadway: *Funny Girl* (2022); *Moulin Rouge; Tina; Ain't Too Proud; Frozen; Hedwig; Book of Mormon; Aladdin*. Film: *In The Heights; The Prom; Jingle Jangle; Tick Tick... Boom!; Dear Evan Hansen; Les Misérables; The Greatest Showman* (Supervising Vocal Producer); Pixar's *Coco*. TV: "The Get Down" (Netflix); "Colbert Show"; Tony Awards; Academy Awards. Lizcaplan.com.

MATT FARNSWORTH VOCAL STUDIO, LLC (*Vocal Coach*). MFVS is honored to work with these talented actors on this masterful show and the others he and his team are currently teaching on Broadway and all over the world. Film: *The Color Purple*, *The Prom*, *Jingle Jangle* and *Respect*. Mattfarnsworthvoice.com @mattfarnsworthvoice.

BUIST BICKLEY (*Production Properties Supervisor*). Select Broadway Credits: *Moulin Rouge*, *MJ*, *Tina*, *Harry Potter and the Cursed Child*, *Spongebob Square Pants: The Broadway Musical*, *Charlie and the Chocolate Factory*, *The Color Purple*, *The Audience*, *The Elephant Man*, *It's Only a Play*, *The Last Ship*, *Act One*, *The Nance*, and *Other Desert Cities*.

RANDY COHEN (*Keyboard Programmer*). Cohen Keyboards has programmed more than 80 Broadway shows including *Hamilton*, *The Book of Mormon*, *Ain't Too Proud*, *Jagged Little Pill*, as well as the *Radio City Christmas Spectacular*. TV credits include keyboardist for HBO/PBS "Sesame Street."

DR. KIRA BANKS (*DEI Consultant*) (she/her) is a thought leader on anti-racism. She consults across multiple industries, including Broadway and Hollywood, helping organizations take diversity, equity, and inclusion goals from idea to action. Learn about her work and podcast at kirabanks.com

STACEY MINDICH (*Producer*) is a Tony, Grammy, and Olivier Award-winning theatrical producer who nurtured *Dear Evan Hansen* through an eight-year development to a global success that broke every box office record and won six 2017 Tony Awards, including Best Musical, among many other awards and accolades. Stacey Mindich Productions has produced more than 20 other plays and musicals, on and off Broadway. Stacey was the recipient of the 2016 Robert Whitehead Award for Excellence in Commercial Producing and The Actors Fund's 2021 Medal of Honor. Believing deeply in the need to develop new musical works and nurture new voices, Stacey has also funded and enhanced productions for a variety of not-for-profit theaters and is a founding board member of the Lilly Award Foundation, which celebrates, supports, and advocates for women theater artists by promoting gender parity at all levels of production. She is also the co-chair of the board at New York City Center, which she has guided for the past ten years, particularly focusing on the beloved Encores series. Stacey is currently serving the Biden Administration and was

appointed by President Joe Biden to the President's Commission on White House Fellowships, which is a program for leadership and public service that provides young Americans experience working at the highest levels of the federal government. Prior to her career in theater, Stacey was a journalist and editor and her essays have appeared in two collections of anthologies called *Social Graces*. Married to Eric Mindich, her favorite productions include her three sons, Russell, Danny and Charlie.

MICKY LIDDELL (*Producer*). Mickey Liddell/LD Entertainment has produced the films *Jackie*, *Judy*, *Anthropoid*, *Introducing Selma Blair*, and *Go*. Theatre credits include *Hadestown*, *Angels in America*, and the off-Broadway revival of *Little Shop of Horrors*.

HUNTER ARNOLD (*Producer*). Select New York & West End: *Hadestown* (Tony); *The Inheritance* (Tony & Olivier); *Moulin Rouge!* (Tony); *Once on This Island* (Tony); *Dear Evan Hansen* (Tony); *Kinky Boots* (Tony & Olivier); *Little Shop of Horrors* (Drama Desk and Drama League Awards); *Chicken & Biscuits*.
@huntercarnold

CAIOLA PRODUCTIONS (*Producer*). Luigi and Rose Caiola. 6 Tony Awards: *The Inheritance*, *Dear Evan Hansen*, *The Color Purple*, *All The Way*, *Who's Afraid of Virginia Woolf*. This Season: *Jagged Little Pill*, *Tina – The Tina Turner Musical*, *Company*.

DOUBLE GEMINI PRODUCTIONS (*Producer*). Wendy Federman and Carl Mollenberg collectively have 23 Tony awards. Thrilled by how many people have been very moved and touched by this show.

FAKSTON PRODUCTIONS (*Producer*). Ken Fakler and Dan Stone are thrilled to be part of the Broadway, London, and National Tours of *Dear Evan Hansen* (Tony Award). Productions include: *Beautiful - The Carole King Musical*, *Company*, *Dreamgirls UK Tour*, and *The Inheritance* (Tony Award).

ROY FURMAN (*Producer*). Current productions: *Moulin Rouge* (Tony Award), *The Book of Mormon* (Tony), *Tina*. Forthcoming: *MJ*, *Funny Girl*. Off-Broadway: *Trevor*, *Little Shop of Horrors*. Vice Chairman Jefferies LLC and Lincoln Center.

HARRIS KARMA PRODUCTIONS (*Producer*). Dede Harris/Sharon

Karmazin have collectively produced over 70 theatrical productions worldwide including 50 Broadway shows, winning 16 Tony Awards, 15 Drama Desk Awards, 5 Olivier Awards.

ON YOUR MARKS GROUP (*Producer*) is a theatrical production company established by award-winning producers Alan D. Marks, Barbara Marks, Scott H. Maruo. With gratitude to our investors, families, friends and our show's creators.

DARREN BAGERT (*Producer*) has produced over 25 productions including the current Broadway hits *Moulin Rouge!* and *Ain't Too Proud - The Life and Times of the Temptations*. Darren has won every major theatrical award and continues to develop new projects both large and small.

BERLIND PRODUCTIONS (*Producer*). Recent productions include *Shuffle Along*, *A View from the Bridge*, *An American in Paris*, *The Curious Incident of the Dog in the Night-Time*, *All the Way*, *The Book of Mormon*.

BOB BOYETT (*Producer*). *Mrs. Doubtfire*; *Company*; *Tootsie*; *To Kill A Mockingbird*; *Curious Incident of Dog...*; *Ann*; *One Man, Two Guvnors*; *Rock 'n' Roll*; *Drowsy Chaperone*; *War Horse*; *South Pacific*; *Boeing-Boeing*; *Coast of Utopia*; *History Boys*; *Spamalot* and *Glengarry Glen Ross*.

COLIN CALLENDER (*Producer*) is an award-winning television and theatre producer. Broadway includes *Lucky Guy*, *Casa Valentina*, *Hedwig and the Angry Inch* (Tony Award) and *Harry Potter and the Cursed Child* (Tony Award).

CAITLIN CLEMENTS (*Producer*) makes her Broadway producing debut with *Dear Evan Hansen*. Proud alum of William & Mary and NYU/Tisch. Special thanks to Stacey and 101. Much love and gratitude to my family.

FREDDY DEMANN (*Producer*) has won three Tonys: *Proof*, *Take Me Out* and *Spring Awakening*. Authors David Auburn and Suzan-Lori Parks won Pulitzers for *Proof* and *Top Dog/Underdog*. Freddy has managed the greatest artists: Michael Jackson and Madonna.

DANTE DI LORETO (*Producer*). Productions include *Funny Girl* (London); *The Glass Menagerie*, *Primo* (Broadway). Executive producer of award-winning programming for FOX, HBO, NBC and Showtime including "P-Valley," "The Normal Heart," "Glee," "American Horror Story" and "Temple Grandin."

BONNIE FELD AND KENNETH FELD (*Producers*). Kenneth Feld is Chairman and CEO of Feld Entertainment, the global leader in live, touring family entertainment. Bonnie Feld is on the board of Signature Theatre in Arlington, Virginia.

FICKSTERN PRODUCTIONS (*Producer*). Steve Fickinger developed hits *Newsies*, *Aladdin* for Disney. Currently producing for Warner Bros. David I. Stern wrote/produced: “Mozart in the Jungle,” *Free Birds*, *Geppetto*, *Snapshots*, *Open Season* series.

ERIC & MARSII GARDINER (*Producer*). Broadway producing for over 16 years with multiple Tony and Drama Desk awards. Highlights include *Jersey Boys*, *Memphis*, *Les Liaisons dangereuses*, *Girl From the North Country*. Marsii has been on the leadership Council of Broadway Cares Equity Fights Aids. Eric is Co-Founder of Purewrist, a financial technology company. We share our passion for the arts with our family and friends.

ROBERT GREENBLATT (*Co-Producer*). Ran Warner Media (HBO Max), NBC, and Showtime. Tony awards: *The Inheritance*, *Dear Evan Hansen*, and *A Gentleman’s Guide to Love and Murder*. Pioneered NBC’s live musicals and produced “Annie Live!” Golden Globe and Peabody awards: “Six Feet Under.”

JEREMIAH J. HARRIS & DARREN P. DEVERNA (*Producer*). Jeremiah J. Harris (Chairman/CEO, PRG) and the late Darren P. DeVerna (former CEO, Global Theatre, PRG). Producing credits include *Beetlejuice* and *Jagged Little Pill*. Partners in Grove Entertainment.

JOHN GORE ORGANIZATION (*Producer*) family of companies includes Broadway Across America and Broadway.com, under 15-time Tony winning producer John Gore (Chairman and CEO).

MIKE KRIAK (*Producer*) Broadway: *Dear Evan Hansen*, *The Prom*. Lincoln Center Theater Board Member. Managing Operating Partner, ConsenSys Mesh, building web3 on Ethereum. Gitcoin Board Member.

DAVID MIRVISH (*Producer*) is based in Toronto where he owns and operates four theatres. Mirvish Productions produces shows throughout Canada, on Broadway and in London’s West End.

EVA PRICE (*Co-Producer*) is a three-time Tony Award-winning Producer. Credits: *Jagged Little Pill, Oklahoma!, Tina - The Tina Turner Musical, Angels in America, Dear Evan Hansen, On Your Feet!, Peter and the Starcatcher, Cruel Intentions, Small Mouth Sounds.*

ZEILINGER PRODUCTIONS (*Producer*). A New York and London-based production company, Zeilinger Productions has produced more than 30 shows, along with television and film, with additional projects in development. For more information, visit www.zeilingerproductions.com

ADAM ZOTOVICH (*Producer*). Credits: *The Color Purple, An American in Paris, Of Mice and Men, Driving Miss Daisy, A View from the Bridge and Dead Poets Society* at Classic Stage Company starring Jason Sudeikis.

AMBASSADOR THEATRE GROUP (*Producer*). The world's number-one theatre company with 45 venues worldwide, an award-winning producer, and the market leader in theatre ticketing.

INDEPENDENT PRESENTERS NETWORK (*Co-Producer*) is a consortium of 40 of America's leading Broadway presenters. Broadway/London/U.S.tours: *Moulin Rouge; The Band's Visit; Dear Evan Hansen; Waitress; Hello, Dolly!*

THE SHUBERT ORGANIZATION (*Producer*). Under the leadership of Robert E. Wankel, Chairman and CEO, The Shubert Organization owns and operates 17 Broadway and six Off-Broadway theatres. The company has produced and co-produced hundreds of plays and musicals, including the upcoming *Some Like It Hot*.

ARENA STAGE AT THE MEAD CENTER FOR AMERICAN THEATER (*Co-Producer and Originating Theater*), led by Artistic Director Molly Smith and Executive Director Edgar Dobie, is a national center in Washington, DC, dedicated to American voices and artists. arenastage.org

SECOND STAGE THEATER (*Co-Producer and Originating Theater*). Under the artistic direction of Carole Rothman, Second Stage produces a diverse range of premieres and new interpretations of America's best contemporary theater. 2ST recently renovated the historic Helen Hayes Theater making it the only permanent home on Broadway dedicated exclusively to living American playwrights.

101 PRODUCTIONS, LTD. (*General Manager*). Wendy Orshan and Jeffrey M. Wilson founded their company in 1994. General Managers include Chris Morey, Jeff Klein, Ron Gubin, and Associate General Managers Ed Nelson, Bobby Driggers and Christopher Taggart. Broadway and Tours: Tony Award-winning Best Musical *Dear Evan Hansen* (Broadway, Tour, London), *Plaza Suite*, *Pretty Woman: The Musical* (Tour, London). Recent Broadway: *Betrayal*. Upcoming Broadway: *for colored girls who have considered suicide/when the rainbow is enuf*, *Macbeth*. General Management Consultant for the McCarter Theatre.

YOU COULD BE FOUND! We're looking for performers 17 years and older to play high school seniors for our Broadway production, North American tour, London production and other future *Dear Evan Hansen* productions. We are committed to inclusive and equitable casting for all roles in *Dear Evan Hansen* and are actively seeking people of all races, cultural backgrounds, abilities, and gender identities to audition.

Visit dearevanhansen.com/auditions-submission/ to find out more.

**DEAR EVAN HANSEN
TOUR STAFF**

Broadway Opening Night: December
4, 2016 - Music Box Theatre

Tour Opening Night: October 5, 2018 -
Buell Theater, Denver, CO

STACEY MINDICH PRODUCTIONS

Associate Producer/Creative Content
Director

Caitlin Clements

DEH Global Marketing Director
Anna Pitera DeVito

Executive Assistant to the Producer
Lynn Matsumoto

Apprentice

Eniola Sodeke

Chief Operating Officer

Tracy Geltman

**GENERAL MANAGEMENT
101 PRODUCTIONS, LTD.**

Wendy Orshan, Jeffrey M. Wilson,
Ron Gubin, Chris Morey, Jeff Klein,
Nazlah Black, Beth Blitzer Coleman,
Ray Clark, Bobby Driggers, Adam
First, Kathy Kim, Ed Nelson, Robert
Nolan, Jenny Peek, Rachel Roberson,
Christine Stump, Steve Supeck,
Christopher Taggart, Frank Wright II

COMPANY MANAGER

DeAnn L. Boise

Associate Company Managers

Laura Quintela

Assistant Company Manager

Robert Gallo

TOUR MARKETING & PUBLICITY
DIRECTION

BOND THEATRICAL

bondtheatrical.com

DJ Martin, Temah Higgins, Mollie
Mann, Marc Viscardi, Wendy Roberts,
Bailey Ford, Phillip Aleman, Melissa
Cohen, Steph Kelleher, Adrienne
Richards, Simon Rosales, Janiya Wade

NATIONAL PRESS
REPRESENTATIVES

grapevine public relations

Molly Barnett, Chelsea Nachman

TOUR BOOKING AGENCY
THE BOOKING GROUP

Meredith Blair, Kara Gebhart Laura
Kolarik, Stephanie Ditman

www.thebookinggroup.com

CASTING

TARA RUBIN CASTING

Tara Rubin, CSA; Merri Sugarman,
CSA; Claire Burke, CSA; Peter Van
Dam, CSA; Felicia Rudolph, CSA;
Xavier Rubiano, CSA;

Kevin Metzger-Timson, CSA;

Louis DiPaolo; Spencer Gualdoni

LEGAL COUNSEL

LEVINE PLOTKIN & MENIN, LLP

Loren Plotkin, Conrad Rippey, Susan
Mindell, Daniel Watkins, Emily Erstling,
Kevin Hess, Cris Criswell

PRODUCTION MANAGEMENT
JUNIPER STREET PRODUCTIONS

Hillary Blanken, Ana Rose Greene, Sadie
Alisa, Guy Kwan, Victoria Bullard, Ross
Leonard, Christopher Batstone Hannah
Wilson

PRODUCTION SUPERVISOR

Judith Schoenfeld

General Manager

Chris Morey

Engagement Management

Ron Gubin

Production Stage Manager

Jovon E. Shuck

Stage Manager

Stacy N. Taylor

Assistant Stage Managers

Katelynn Cooper, Brant Sennett

Senior Associate Director

Danny Sharron

Senior Associate Choreographer

Mark Myars

Associate Directors

Trey Ellett, Candis C. Jones

Associate Choreographers

Jennifer Rias, Jonathan Warren

Assistant Director

Miranda Cornell

Associate Scenic Designers

Amanda Stephens, James Burns

Associate Costume Designer

Clare Wasserman

Associate Lighting Designer

Ken Wills

Assistant Lighting Designer

Jessica Creager

Associate Projections Designers

Dan Scully, David Bengali

Associate Sound Designer

Jessica Paz

Natural Hair Consultant

Jennifer Lord

DEI Consultant

Dr. Kira Banks

Vocal Consultant

Liz Caplan

Vocal Coach

Matt Farnsworth

Production Carpenter

Chad Woerner

Production Electrician

Jeremy Wahlers

Moving Light Programmers

Scott K. Tusing, Jeremy Goldenberg

Video/Projections Engineer

Asher Robinson

Video/Projection Programmers

Benjamin Keightley, Zach Peletz

Lead Video/Projection Editor

Andrew Bauer

Video/Projection Editor

Dan Vatsky

Additional Video Editing

Robert Figueira

Video Intern

Nick Graci

Productions Props

Buist Bickley

Assistant Production Props

Chris Kavanah

Production Sound

Nick Borisjuk

Music Coordinators

Michael Keller, Michael Aarons

Music Assistant

Haley Bennett

Assistant Keyboard Programmer

Taylor Williams

Guitar Programmer

Dillon Kondor

Covid Safety Managers

Ellen O'Neill, Kevonna Shuford

Management Assistant

Coleman Ray Clark

Production Assistants

Julius Cruz, Eric Nolan Mattingly

Music Executive for Benj Pasek and

Justin Paul

Jordan Carroll

Assistant to Benj Pasek

Danielle Perelman

Assistant to Justin Paul

Savannah Hankinson

Assistant to Steven Levenson

Matt Steinberg

TOURING CREW

HEAD CARPENTER

JAMIE KURTZ

Flyman Carpenter

Jason Edens

Automation Carpenter

Randy DeBoer

Assistant Carpenter

Chris Weber

Advance Carpenter

Geoff Keller

Head Electrician

Nate Eyestone

Assistant Electricians

Rob Connors, Jordan Brown

Advance Electrician/Video

Benjamin Abernathy

Head Audio

Justin Graziani

Assistant Audio

Tyler Ponath

Advance Audio

Alex Ritter

Head Props

Lonnie Goertz

Assistant Props

Karen Byers

Crew Cover

Mark "Sparky" Mallory

Robert DeCandia

Head Wardrobe

Matt Myers

Assistant Wardrobe

Jamie Brown

Hair & Wig Supervisor

Jessica McGinty

Hair & Wardrobe Swing

Vicky Martinez

Physical Therapy

Neuro Tour Physical Therapy, Inc. /

Carolyn Lawson

Medical Director

Dr. Craig Weil

Accountant

WithumSmith + Brown, PC/Robert
Fried, Karen Kowgios, Anthony
Moore, CPAs

Controller

Galbraith & Co./Sarah Galbraith

Advertising & Marketing

Serino Coyne/Hailey Barton, Tom
Callahan, Jay Cooper, Peter Gunther,
Madeline Hurley Jones, Jennifer
Matte, Jacqueline Rosas, Matt Upshaw,
Bradlie Yanniello

Social Media

Marathon Digital/Mike Karns,
Melanie Pateiro, Ava Coploff, Polina
Sapershteyn, Nathan McMonigle

DEH Global Ticketing & Analytics
TANNA Inc./Gregg Arst

Casting Associate

Kevin Metzger-Timson

Banking

City National Bank

Insurance DeWitt Stern Group, Inc.

Housing

Road Concierge / Lisa Morris

Air Travel

Tzell Travel / Andi Henig, Alan
Braunstein, Jeanne Lafond

Merchandising

Creative Goods Merchandise

Merchandise Manager

Jeffrey Heitman

Assistant Merchandising Manager
Malaysia Bradley

Key Art Design

Matthew Cohen

Production Photographers

Matthew Murphy, Jenny Anderson

Production B-Roll

HMS Media

Payroll Services

Checks & Balances

Trucking

Clark Transfer

Company Mascots

Katie, Harper, Lucy, Butler, Gatsby,
Winston Jones

To learn more about this production,
visit dearevanhansenbroadway.com

Please follow us on Twitter, Facebook,
Instagram & TikTok:
[@DearEvanHansen](https://twitter.com/DearEvanHansen)

CREDITS

Scenic items fabricated by PRG-
Scenic Technologies. Show control
and scenic motion control featuring
Stage Command Systems by PRG-
Scenic Technologies, a division of
Production Resource Group, LLC,

New Windsor, NY. Scenic elements provided by Daedalus Design and Production, Inc. Lighting Equipment from PRG Lighting. Audio Equipment from PRG Audio. Video projection system provided by Worldstage. Props built by: Behind The Mule Studio, Gen-esis Upholstery, and Brenbri Props. Evan Polo by By Barak LLC. Costume support by: Gene Mignola, Cego Shirtmakers, Timberlake Studios Inc., and Jeff Fender Studio Inc. Cover photo by Joan Marcus and Margo Schulman. Hosiery and undergarments provided by Bra*Tenders. Props trucking by JP Carrier. Upholstery by R Ramos Upholstery.

PHOTO CREDITS

Photos, including those under Creative Commons license, are credited to (OvO), @abrunvoll, 123rf, acheron0, Adrienne Wichard-Edds, Aidan Sage, Alan, Alexis Evans-Krueger, Alisha Vargas, Alka Phi, Andrea, Andrew Bauer, Andrew Tseng, Andy Arthur, AndyCunningham, Art by David Evans, Ashley Bischoff, Astacus, babyratio, Barabeke, Becky, BellaGaia, bet-yarlaca, biwanoki, buzzbo, CAHairyBear, Casey Bisson, Cesar Garza, Cheyenne Michaels, Chris Burke, Chris Goldberg, Chris Macke, Christa Terry, Christian Kortum, Christin Bela, chusall,

Cl@ra-bella, Constantinis, Crimic Gulmatico, Curtis Fry, Dale Bush, Daniel Ernst, Daniel Hoherd, Daniel Kulinski, Darren Hester, David Goehring, Davide Costanzo, Debby Conway, Desert Bus For Hope, dfb, Dimitris Plantzos, Dustin Moore, Ed Yourdon, Eivind Senneset, Elias Rovielo, eltpics, Emily Eidenberger, Eric Wagner, Erica M, European Roads, Eva Swap, Fabian Sanhueza, Florian Seroussi, Garen Meguerian, Giles Watson, Glenn Austerfield, Gordon, gpointstudio, Grellan, Haleyface, Hamner_Fotos, Hayati Manshor, HeatherBie, indieclectic, Irina Fuks, IRRi Photos, Isra Se Go, ItzaFineDay, Ivana Vasilj, Jacob Gube, Jacob Loupe, jacqueline-w, jakubzak, James Emery, Jeff Dannaldson, Jerry Meaden, Jessie, Jessie Eastland, Jim Roberts, Jim Scott, Joe Diaz, Joel Abroad, Joel Ackerman, John Loo, Jonathan Yao, Jorge Montiel, Jory, Julie Faist, Julie Jordan Scott, julochka, Kamil Medryk, Karen Broz, Kendra Goering, Kevin Miller, Kim F, Kim Tairi, Kit, kittencakes, Kurt & Julie Faist, Lauren Vandevier, ljubaphoto, Loren Kerns, m-imagephotography, Margaret Harrison, Maria Fernanda Aristizabal M., Maria Morri, Massimo Ankor, Massimo Ankor, Matthew Glover, Melissa Ingram, Mighty Mighty bigmac, Miguel Ariel Contreras Drake-McLaughlin, Mike F., Mike Faist, Mike

Gifford, miuenski miuenski, Munchen, Museum im Residenzschloss, Kaisersaal, Nanda, Nathan Kemmerer, neeroc1, noisy nisroc, oddobjects, Patricia, Paul Bausch, Paul Jacobson, Paul Johnson Pahotography, Petar Cher-naev, Peter Kemmer, Philip, Presidio of Monterey, PRODavide Costanzo, Rachel Barenblat, Radist, Randy McDonald, Rasica, Ridofranz, rik-shaw, Roadsidepictures, Robert Hutton, Robert Lochner, Rodrigo Della Favera, Rodrigo Della Favera, Rodrigo Della Favera, Rodrigo Sá Bar-reto, Rogan Templer, Ron Lute, rubyblossom., Ruth Sattler, Samandel.com, Shari Alisha, Shirin Tinati, smashpopnineteen, Stefan Klocek, tanakawho, Taylor McBride, Thanh Pham, the autow-itch, The Wolves Of Bathlam, Tito Perez, TNS Sofres, Tomasz Konefal, Tommy Ga-Ken Wan, Tony & Wayne, Tony Baldasaro, Tony Hammond, Travis Baugh, Universal Pops, Unknown, US Army Africa, Virginia (Ginny) Sanderson, Wade Tregaskis, Wendy Brown, Will Wysong, www.mosalumni.info

This production was rehearsed at Sunlight Studios.

**B R O A D W A Y A T
W H A R T O N C E N T E R**

SUPPORTED BY MSU FEDERAL CREDIT UNION



The Actors and Stage Managers employed in this production are members of Actors' Equity Association, the Union of Professional Actors and Stage Managers of the United States.



Backstage employees are represented by the International Alliance of Theatrical Stage Employees (or I.A.T.S.E.).



The Musicians, Conductors, Music Preparation Personnel and Librarians employed in this production are members of the American Federation of Musicians of the United States and Canada.



The Press Agents and Company Managers employed in this production are represented by the Association of Theatrical Press Agents & Managers.



The Director and Choreographer are members of the Society of Stage Directors and Choreographers, Inc., an independent national labor union.



United Scenic Artists represents designers and scenic artists for the American Theatre.



This production is produced by a member of The Broadway League in collaboration with our professional union-represented employees.

NOT-FOR-PROFIT PARTNERS

DEAR EVAN HANSEN is proud to collaborate with:



CHILD MIND INSTITUTE is an independent, national nonprofit dedicated to transforming the lives of children and families struggling with mental health and learning disorders.

CRISIS TEXT LINE

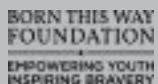
CRISIS TEXT LINE is free, 24/7 support for those in crisis. Text 741741 from anywhere in the US to text with a trained Crisis Counselor. Crisis Text Line trains volunteers to support people in crisis.



THE JED FOUNDATION is a nonprofit that exists to protect emotional health and prevent suicide for our nation's teens and young adults.



THE TREVOR PROJECT is the leading national organization providing crisis intervention and suicide prevention services to lesbian, gay, bisexual, transgender, and questioning young people.



BORN THIS WAY FOUNDATION is committed to supporting the wellness of young people and empowering them to create a kinder and braver world.



THE LOVELAND FOUNDATION's Therapy Fund provides therapy support to Black women and girls nationwide.

For more information about our not-for-profit partners, visit:
dearevanhansen.com/partners

POLICIES AND SERVICES

PERSONAL RESPONSIBILITY STATEMENT

Wharton Center offers a diverse selection of arts entertainment. Not all productions may appeal to or be appropriate for every person or for all ages. Patrons are encouraged to familiarize themselves with the shows we offer in order to make informed decisions prior to purchasing tickets.

IN CASE OF AN EMERGENCY

Please observe the lighted exit signs located throughout the building and theatre(s). All patrons should note all exits, especially those closest to your seat location. Our staff and ushers are trained to assist patrons through multiple emergency situations.

FIRST AID

See your usher or House Management Room 209 (in Grand Foyer).

- › Helpful Tips
Cameras, children, late seating
- › Patron Amenities
Lost and found, coat check, etc
- › Accessibility Services
Including SLI, AD, and OC
- › Ticket Office
Exchanges, refunds, fees, hours
- › Mobile Tickets
Access & transfer your mobile tickets
- › Consumer Alert
Avoid being ensnared by resellers
- › Directions and Parking
Nearby parking ramps and lots
- › Engagement Programs
After Chats and Insight Previews
- › Security
Prohibited items and security checks
- › COVID-19 Safety
Patron Safety Protocols

SUPPORTERS AND STAFF

Wharton Center gratefully recognizes our Circle Members for their philanthropic contribution, our Legacy donors who have chosen to support with their estate plans, individuals and organizations that have established named endowments to support Wharton Center, and our corporate sponsors.

Wharton Center would like to acknowledge the members of IATSE local 274.

- › Circle Members
- › Seats 4 Kids Donors
- › Legacy Circle
- › Endowments
- › Corporate Sponsors
- › Wharton Center Staff
- › Volunteer Committees